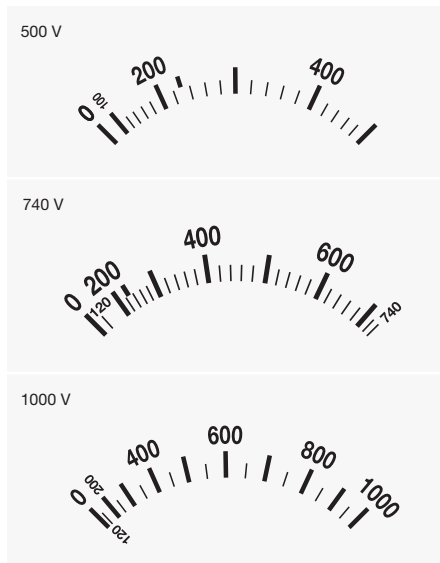


Prüfball SPB Analog

Safety casing made of solid rubber



SPB 500P



Three measurement ranges are optionally available

The Prüfball SPB is the right tool for operation in energy supply - robust, precise and maintenance-free.

- Safety casing made of solid rubber extremely impact resistant, water and dust proof
- Wide range of types and three measurement ranges up to 1000 V
- Phase, phase sequence and continuity test, acoustic signal, RCD tripping*
- Reliable testing without battery





Instrument for professional use in power engineering

For more than 60 years, the Prüfball is successfully used in operating ranges with increasing requirements:

- energy providers with high safety requirements and high accuracy demands
- industrial firms with extreme ambient conditions
- service providers who prefer robust and long life test instruments

Approved safety concepts

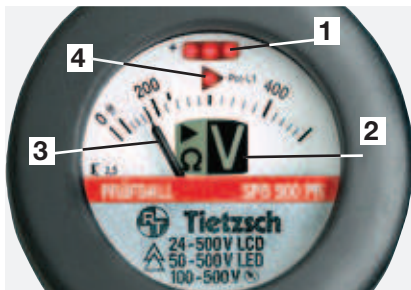
The case of solid rubber encloses the measuring system and switching mechanism:

- impact-resistant, impact-proof
- water- and dust-proof
- overvoltage protection - CAT IV
- secure two-hand tripping device for low resistive checks through patented special push-button with wide contact gap

Exact, precise display

Reliable test by three display systems and connectable load:

- direct indication by LCD indicator and LEDs, clearly visible in bright and dark environments
- connectible low resistive measuring system indication and the additional load RCD tripping*
- no battery required



1. LED-signal at > 50 V without keypress with P/R types* a third (center) LED lights up at > 24 V
2. LCD indicator with big V at > 24 V also for phase, phase sequence, continuity
3. exact analogue display, connectible
4. LED-triangle for phase/phase sequence*



Wide range of types

The Prüfball is available in diverse varieties, adapted to individual use:

- optional three measurement ranges up to 1000 V
- accessible electrode for phase and phase sequence test
- continuity test
- acoustic signal for voltages
- additional load for RCD tripping (residual-current-operated protective device)



Wide range of accessories

- bags
- extensions for tests at overhead lines
- plastic casing for extensions
- test prods for test objects difficult to access
- insertion prods for underground cable
- adapter for the test lines with 4 mm standard plug

Article number / Order data

Type overview on page 16

Accessories on page 48

Technical data

Two-pole voltage tester tested and certified by VDE in accordance with EN/IEC 61243-3 (VDE 0682 part 401)

Type / Nominal voltage

| | |
|---------------------|--------------------|
| SPB 500 (P/PR/PRA)* | 24 ... 500 V AC/DC |
| SPB 740 (P/PR)* | 24 ... 740 V |
| SPB 1000 (P/PR)* | 24 ... 1000 V |

Voltage indication

high-impedance, direct reading:
 LCD > 24 V, 2 LEDs > 50 V, PR* + 1 LED > 24 V
 ⊕ low resistive connected:
 moving-iron instrument, large 90° scale
 100 ... 500 V, 120 ... 740 V, 120 ... 1000 V
 effective value accuracy
 cl. 2,5: basic accuracy 2,5% + reading errors
 Acoustic signal (SPB 500PRA)*
 > 55,5 dB interval according to ISO 3744

Phase / Drehfeld* / Polarität

LED and LCD triangle ≥ 165 V
 for phase unipolar with contact sensor
 for phase sequence two-pole with sensor
 type of voltage + / - / ~ by 2 LEDs

Frequency

0...100 Hz

Input resistance

direct: depending on type 0,6 ... 0,8 MΩ
 ⊕ switched: depending on type 54 ... 88 kΩ
 SPB 500PRA* (acoustic) 20 kΩ
 PR type* with additional load for RCD tripping of 30 mA RCDs 4,3...7 kΩ

Current peak value

direct: < 3,5 mA
 ⊕ switched: 40 mA, PR*: 300 mA
 (35 mA at 230 V – RCD tripping)

On-time

30 sec

Continuity*

0 ... 2 MΩ Ω-symbol in LCD

Surge voltage strength

>12 kV case insulation to user
 >12 kV switching mechanism between test prods

Insulation test voltage

6 kV unit inspection of case and line

Overvoltage category

CAT IV in accordance with IEC 60664-1 (VDE 0110)

Operating temperature

-10°C ... + 55°C

Power supply

maintenance-free - without battery, test functions voltage and acoustic are supplied from the mains, continuity, phase and phase sequence by Li-storage, refreshable

Casing

solid rubber EPDM, unbreakable display cover made of indestructible polycarbonate

Protection category

IP 65, device can be used in moist environments

Line

PUR control cable, 1000 V, 1m

Dimensions / weight

274 x 75 x 47 mm (display part) / approx. 420 g

* equipment depending on type:

P with phase and phase sequence tester
 R with continuity tester
 A with acoustic signal for voltage
 500PR, 740PR, 1000PR with additional load