

Ø 6 MM SYSTEM

Ø 6 mm Test Accessories

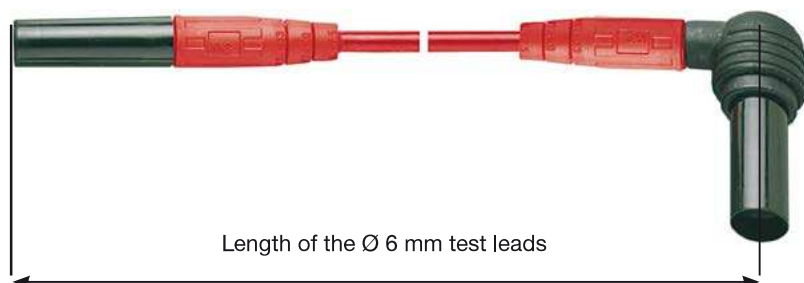
The Ø 6 mm product range is designed for high-current use up to a maximum of 125 A (depending on the cable cross section). It can be used in applications where the Ø 4 mm range is not large enough for the transmission of electrical energy.

Particular emphasis must be given to the level of protection against electric shock of this Ø 6 mm safety range which plays a crucial factor in accident prevention.

The following Ø 6 mm plug connections have the proven Stäubli Locking System (AR). This "Push-Pull Quick Release System" has considerable safety advantages over the screw or binding post connectors

with cable lugs (see below). The following selection illustrates just a small extract from our high-current range. In addition to these touch-protected connectors we can offer a multitude of high-current connectors for use in special applications.

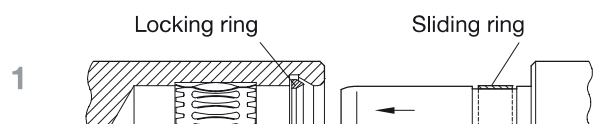
For further information, please order the main catalog "Round Connectors, 1-pole, insulated, 6 mm".



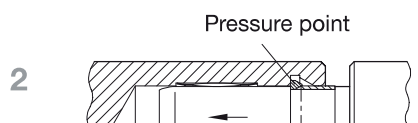
Please note that the length of the Ø 6 mm test leads is the overall length, including the connectors!

Stäubli Locking System

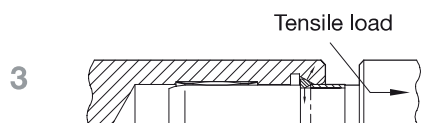
Lock



Insert plug into socket...

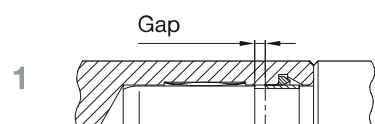


...and lock.

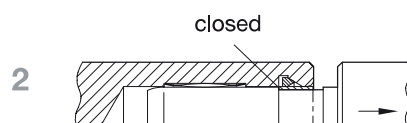


The connection can be placed under a tensile load.

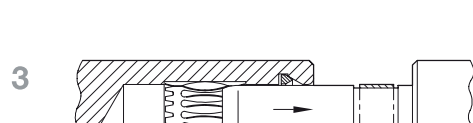
Release



To release, push plug further in...



... and pull.



The connection is released.

Ø 6 mm Test Leads

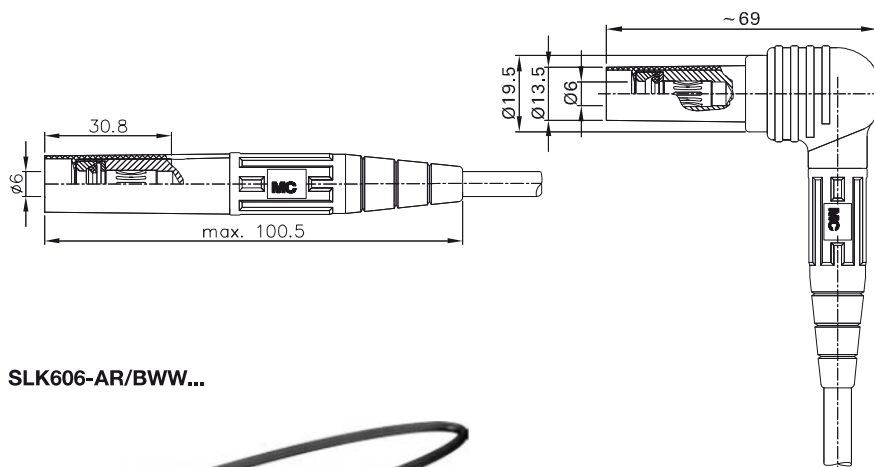
Test Lead SLK606-AR...

Highly flexible, with insulation in PVC or silicone, lead cross section 6.0 mm². On both ends with Ø 6 mm sockets with spring-loaded MULTILAM and with rigid insulating

sleeve. Contact parts made of silver-plated brass with gold-plated MULTILAM. A locked connection can be made when used together, for example, with the Ø 6 mm plug

panel receptacle type ID/S6AR..S, which has an Stäubli locking system (page 99). Leads available with in-line or right-angled plug connectors.

SLK606-AR/BGG...



SLK606-AR/BGW...



SLK606-AR/BWW...



Order No.	Type	Rated voltage/current	Plug connectors		Cable length [cm]	*Colors
15.2500-100*	SLK606-AR/BGG	600 V, CAT III / 54 A	in-line / in-line	Ag PVC CE	100	21 22 23
15.2504-100*	SLK606-AR/BGG/SIL	600 V, CAT III / 54 A	in-line / in-line	Ag SIL CE	100	21 22 23
15.2516-100*	SLK606-AR/BGW	600 V, CAT III / 54 A	in-line / 90°	Ag PVC CE	100	21 22 23
15.2520-100*	SLK606-AR/BGW/SIL	600 V, CAT III / 54 A	in-line / 90°	Ag SIL CE	100	21 22 23
15.2508-100*	SLK606-AR/BWW	600 V, CAT III / 54 A	90° / 90°	Ag PVC CE	100	21 22 23
15.2512-100*	SLK606-AR/BWW/SIL	600 V, CAT III / 54 A	90° / 90°	Ag SIL CE	100	21 22 23

Ø 6 mm Panel Receptacles

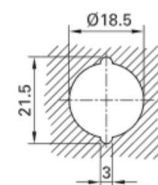
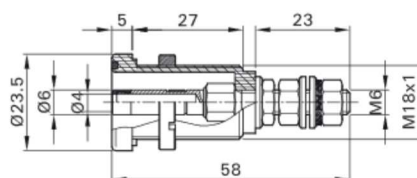
Panel Receptacles ID/S6AR-N-B4S

Insulated, with Ø 6 mm pin, made of silver-plated brass, accepting Ø 6 mm sockets with spring-loaded MULTILAM and rigid insulating sleeve. With the integrated Ø 4 mm socket, the terminal mates alternatively with

spring-loaded Ø 4 mm plugs with rigid insulating sleeve. The terminal has a black housing and is fitted with a colored ring on the front side. In combination with the test leads SLK6..-AR/B.., a locked connection

can be made. The terminal is screwed into pre-drilled panels of plastic, metal, etc.

Connection: Threaded bolt M6.



Order No.	Type	Rated voltage/current		*Colors (only color ring)										
14.0034-*	ID/S6AR-N-B4S	600 V, CAT III / 80 A	Ag c  US	<table border="1"> <tr> <td>20</td><td>21</td><td>22</td><td>23</td><td>24</td></tr> <tr> <td>25</td><td>26</td><td>27</td><td>28</td><td>29</td></tr> </table>	20	21	22	23	24	25	26	27	28	29
20	21	22	23	24										
25	26	27	28	29										



Tube spanner SS6, page 107



Assembly instructions MA038

www.staubli.com/electrical