

Portable power quality analysis center

Features

- 7" touchscreen - ergonomic and intuitive graphical user interface.
- Over 10 years of recording.
- CAT IV 600 V measurement category - high safety.
- All parameters according to class S - high accuracy of measurements.
- Li-Ion rechargeable battery - higher mobility.
- Powering from measured network - reliability of measurements.
- Removable memory card - recording data with no restrictions.
- Quick setup and reporting - ease of use.
- Cooperation with desktop Sonel Analysis software - extended data analysis.

Measured parameters

- Inrush current.
- Inverter efficiency.
- Voltages L1, L2, L3, N, PE (five measurement inputs) – average, minimum, maximum and instant values within the range up to 760 V, interoperability with voltage transducers.
- Currents L1, L2, L3, N (four measurement inputs) – average, minimum and maximum values, current measurement within the range up to 6 kA (depending on applied current clamp), interoperability with current transducers.
- Crest factors for current CFI and voltage CFU.
- Frequency within the range of 40...70 Hz.
- Active (P), reactive (Q), distortion (D) and apparent (S) power with the type of reactive power (capacitive and inductive).
- Active (E_p), reactive (E_q) and apparent (E_s) energy.
- Power factor PF, cosφ, tanφ.
- Harmonics up to the 50th order of voltage and current.
- Event logging for current and voltage along with oscillograms and half-period RMS charts.
- Energy cost calculator.
- ...and much more.
- All parameters are recorded in compliance with class S according to IEC 61000-4-30 standard



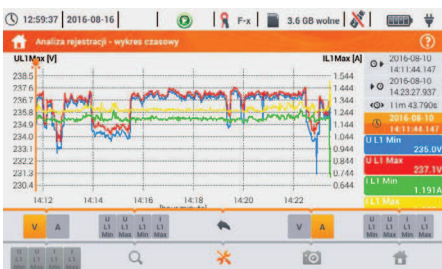
Wide range of mains to analyze

- **With rated frequency** 50/60 Hz
- **With rated voltages:** 58/100 V, 64/110 V, 110/190 V, 115/200 V, 120/208 V, 127/220 V, 133/230 V, 220/380 V, 230/400 V, 240/415 V, 254/440 V, 290/500 V, 400/690 V
- **Direct current**
- **Systems:**
 - » single-phase
 - » split-phase with common N
 - » three-phase – WYE with and without N conductor
 - » three-phase – Delta
 - » three-phase – WYE and Delta Aron
 - » with current and voltage transducers



Capabilities

PQM-707 is an autonomous meter allowing versatile measurement, analysis, and registration of energy network (DC and 50/60 Hz) parameters. All parameters are measured I/A/W class S of the IEC 61000-4-30 standard guaranteeing high accuracy of measurements. The **7-inch colour touchscreen** - The largest in this class of analyzers! - enables intuitive and ergonomic operation. Thanks to the built-in lithium-ion battery, the analyzer allows for efficient work during the measurement without the necessity of connecting an external AC adapter.



Displaying data

The analyzer is equipped with a readable colour touchscreen. Its **800 x 480 pixel** resolution provides both high comfort of interacting with the interface and high readability of the measurement results. **The included stylus allows you to work with dielectric gloves.**



Application

The analyzer is directed to a very wide range of users, with particular reference to the maintenance staff. Due to its mobility and autonomy, any problems occurring in the supply networks can be diagnosed on the spot. The analyzer can be used in virtually all kinds of networks with rated voltage from 54 V to 760 V - directly or indirectly via transducers. PQM-707 can be used in the field of professional power engineering, maintenance services in industrial plants, as well as among those providing services focused on network analysis.



Durable and practical casing


The casing has been designed to allow easy access to the touchscreen and all measurement and communication sockets. Folding lid protects the display from damages. Thanks to the IP51 protection degree, the device can be used in difficult conditions - it is not afraid of dust or water splashes.

Parameters

Parameter		Measuring range	Max. resolution	Accuracy
Alternating voltage (TRMS)	—	0.0...760.0 V	4 significant digits	$\pm 0.5\% U_{nom}$
Crest Factor	Voltage	1.00...10.00 (≤ 1.65 for 690 V)	0.01	$\pm 5\%$
	Current	1.00...10.00 (≤ 3.6 for I_{nom})	0.01	$\pm 5\%$
Alternating current (TRMS)	—	depending on clamp *	$0.01\% I_{nom}$	$\pm 0.2\% I_{nom}$ (error does not account for clamp error)
Frequency	—	40.00...70.00 Hz	0.01 Hz	± 0.05 Hz
Active, reactive, apparent and distortion power	—	depending on configuration (transducers, clamps)	4 significant digits	depending on configuration (transducers, clamps)
Active, reactive and apparent energy	—	depending on configuration (transducers, clamps)	4 significant digits	as power error
cosφ and power factor (PF)	—	0.00...1.00	0.01	± 0.03
tanφ	—	0.00...10.00	0.01	depends on error of active and reactive power
Harmonics	Voltage	DC, 1...50	as for alternating voltage True RMS	$\pm 0.15\% U_{nom}$ for m.v. < 3% U_{nom} $\pm 5\%$ m.v. for m.v. $\geq 3\% U_{nom}$
	Current	DC, 1...50	as for alternating current True RMS	$\pm 0.5\% I_{nom}$ for m.v. < 10% I_{nom} $\pm 5\%$ m.v. for m.v. $\geq 10\% I_{nom}$
THD	Voltage	0.0...100.0% (relative to RMS value)	0.1%	$\pm 5\%$
	Current			$\pm 5\%$
Flicker index	—	0.40...10.00	0.01	$\pm 10\%$
Unbalance factor	Voltage and current	0.0...10.0%	0.1%	$\pm 0,15\%$ (absolute error)
Inrush current	Current	depending on clamp *	$0.01\% I_{nom}$	$\pm 4\%$ m.v. for m.v. $\geq 10\% I_{nom}$ $\pm 4\% I_{nom}$ for m.v. < 10% I_{nom} (RMS _{1/2})

m.v. – measured value

* F-1A1, F-2A1, F-3A1 clamp: 0...1500 A AC (5000 A_{pp}) • F-1A, F-2A, F-3A clamp: 0...3000 A AC (10 000 A_{pp}) • F-1A6, F-2A6, F-3A6 clamp: 0...6000 A AC (20 000 A_{pp})
C-4A clamp: 0...1000 A AC (3600 A_{pp}) • C-5A clamp: 0...1000 A AC/DC (3600 A_{pp}) • C-6A clamp: 0..10 A AC (36 A_{pp}) • C-7A clamp: 0...100 A AC (360 A_{pp})

							
	C-4A	C-5A	C-6A	C-7A	F-1A1 / F-1A / F-1A6	F-2A1 / F-2A / F-2A6	F-3A1 / F-3A / F-3A6
	WACEGC4A0KR	WACEGC5A0KR	WACEGC6A0KR	WACEGC7A0KR	WACEGF1A10KR WACEGF1A0KR WACEGF1A60KR	WACEGF2A10KR WACEGF2A0KR WACEGF2A60KR	WACEGF3A10KR WACEGF3A0KR WACEGF3A60KR
Rated current	1000 A AC	1000 A AC 1400 A DC	10 A AC	100 A AC	1500 / 3000 / 6000 A AC		
Frequency	30 Hz...10 kHz	DC...5 kHz	40 Hz...10 kHz	40 Hz...1 kHz	40 Hz...10 kHz		
Output signal level	1 mV / 1 A	1 mV / 1 A	100 mV / 1 A	5 mV / 1 A	77.6 μV / 1 A	38.8 μV / 1 A	19.4 μV / 1 A
Max. diameter of measured conductor	52 mm	39 mm	20 mm	24 mm	360 mm	235 mm	120 mm
Minimum accuracy	$\leq 0.5\%$	$\leq 1.5\%$	$\leq 1\%$	0.5%	1%		
Battery power	—	✓	—	—	—		
Lead length	2.2 m	2.2 m	2.2 m	3 m	2.2 m		
Measurement category	IV 300 V	IV 300 V	IV 300 V	III 300 V	IV 600 V		
Ingress protection	IP40				IP67		

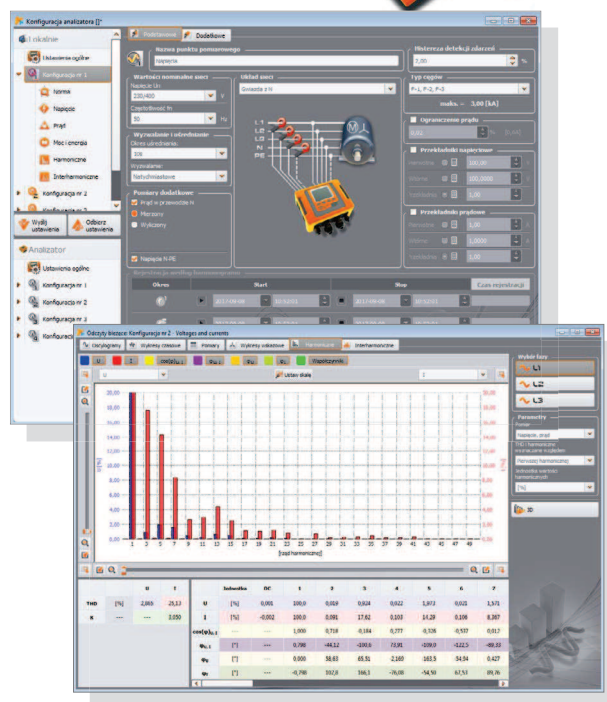
SONEL ANALYSIS

Sonel Analysis software - application delivered as standard accessory, indispensable for working with PQM-series analyzers. It enables:

- analyzer configuration,
- data reading from logger,
- preview of network parameters in real time (with capability of reading via GSM modem),
- deletion of data in the analyzer,
- data presentation in tables,
- data presentation in charts,
- data analysis in compliance with standard EN 50160 (reports) and other user defined reference conditions,
- independent support of multiple analyzers,
- analyzer firmware updates.

The software enables readout of selected parameters and their visualization in real time. These parameters are measured independently from the registration saved on the memory card. The user can view:

- charts of voltage and current progression (oscilloscope),
- charts of voltage and current over time,
- phasor diagram,
- measurements of multiple parameters,
- harmonics and harmonic powers,
- interharmonics.



Standard accessories



3 x crocodile clip, black, 1 kV, 20 A
WAKROBL20K01



2 x crocodile clip, red, 1 kV, 20 A
WAKRORE20K02



Crocodile clip, blue, 1 kV, 20 A
WAKROBU20K02



Crocodile clip, yellow, 1 kV, 20 A
WAKROYE20K02



4 x F-3A flex-ible clamp (Ø=120 mm) 3 kA
WACEGF3AOKR



3 x test lead with banana plugs; 1 kV; 2.2 m; black
WAPRZ2X2BLBB



Test lead with banana plugs; 1 kV; 2.2 m

blue
WAPRZ2X2BUBB

yellow-green
WAPRZ2X2YEBB



4 x magnetic voltage adapter - set
WAADAUMAGKPL



Li-ion rechargeable battery 11.1 V 3.4 Ah
WAUKU15



AC-16 line splitter
WAADAAC16



Calibration certificate issued by an accredited laboratory



Storage & carrying

L-4 carrying case
WAFUTL4



Meter strap (type L-2)
WAP0ZSZEKPL



Power supply

Z-7 power supply
WAZASZ7

AZ-2 power adapter (IEC C7 plug / banana plugs)
WAAZAAZ2

230 V power cord (IEC C7 plug)
WAPRZLAD230

Battery charging cable for 12 V car sockets
WAPRZLAD12SAM



Data transfer and analysis

USB cable
WAPRZUSB

Sonel Analysis software
WAPROANALIZA4



Optional accessories



F-1A flexible clamp
(Φ=360 mm)

1.5 kA: WACEGF1A10KR
3 kA: WACEGF1A0KR
6 kA: WACEGF1A60KR



F-2A flexible clamp
(Φ=235 mm)

1.5 kA: WACEGF2A10KR
3 kA: WACEGF2A0KR
6 kA: WACEGF2A60KR



F-3A flexible clamp
(Φ=120 mm)

1.5 kA: WACEGF3A10KR
3 kA: WACEGF3A0KR
6 kA: WACEGF3A60KR



C-4A clamp
(Ø 52 mm)
1000 A AC

WACEGC4A0KR



C-5A clamp
(Ø 39 mm)
1000 A AC/DC

WACEGC5A0KR



C-6A clamp
(Ø 20 mm)
10 A AC

WACEGC6A0KR



C-7A clamp
(Ø 24 mm)
100 A AC

WACEGC7A0KR



L2 carrying case
for clamps

WAWALL2



Magnetic voltage
adapter

black
WAADAUMAGKBL
blue
WAADAUMAGKBUB



Pin probe, blue 1 kV
(banana socket)

black / blue / red / yellow
WASONBLOGB1
WASONBUOGB1
WASONREOGB1
WASONYEOGB1



ASX-1 piercing
adapter – set (4 pcs)

WAADAPRZASX1



Voltage adapter
with M4/M6
thread - set 5 pcs

WAADAM4M6



Flat test clip
(grip - banana
socket) (5 pcs)

WASONKCB1KPL



Test clips with steel
jaws – set (5 pcs)

WASONKGB1KPL



Adapter for control
terminals (5 pcs)

WAADAPRZKPL1



AGT-16C three-
phase socket adapt-
er 16 A / 32 A (PEN)

WAADAAGT16C
WAADAAGT32C



AGT-16P three-
phase socket adapt-
er 16 A / 32 A

WAADAAGT16P
WAADAAGT32P



AGT-63P three-
phase socket adapt-
er 63 A

WAADAAGT63P



AGT-16T indus-
trial socket adapter
16 A / 32 A

WAADAAGT16T
WAADAAGT32T










Cover with a
magnetic strip
(universal)

WAPOZUCH8



Calibration
certificate with
accreditation



			PQM-711 
			PQM-703 
		PQM-710 	
	PQM-702T 		
	PQM-702 		
	PQM-707 		
PQM-700 			
Portable Class S analyzer for basic and long term analysis	Stand alone Class S mains network analyzer for fast diagnosis	Class A high accuracy mains network analyzer	Top class of mains network analyzers with transients capture



Get to know the instrument
before buying



www.sonel.com



Expand your capabilities
with additional accessories